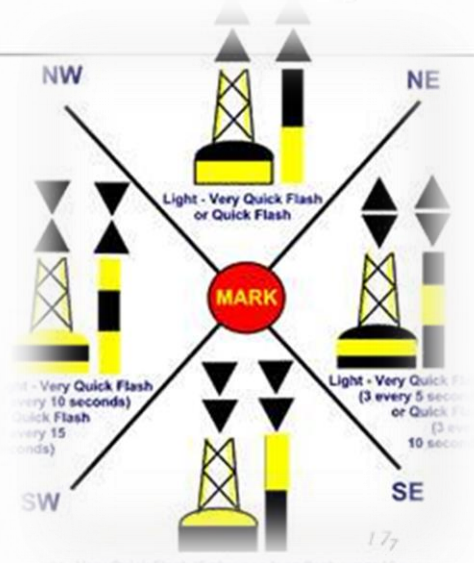


GPS Setup and Units

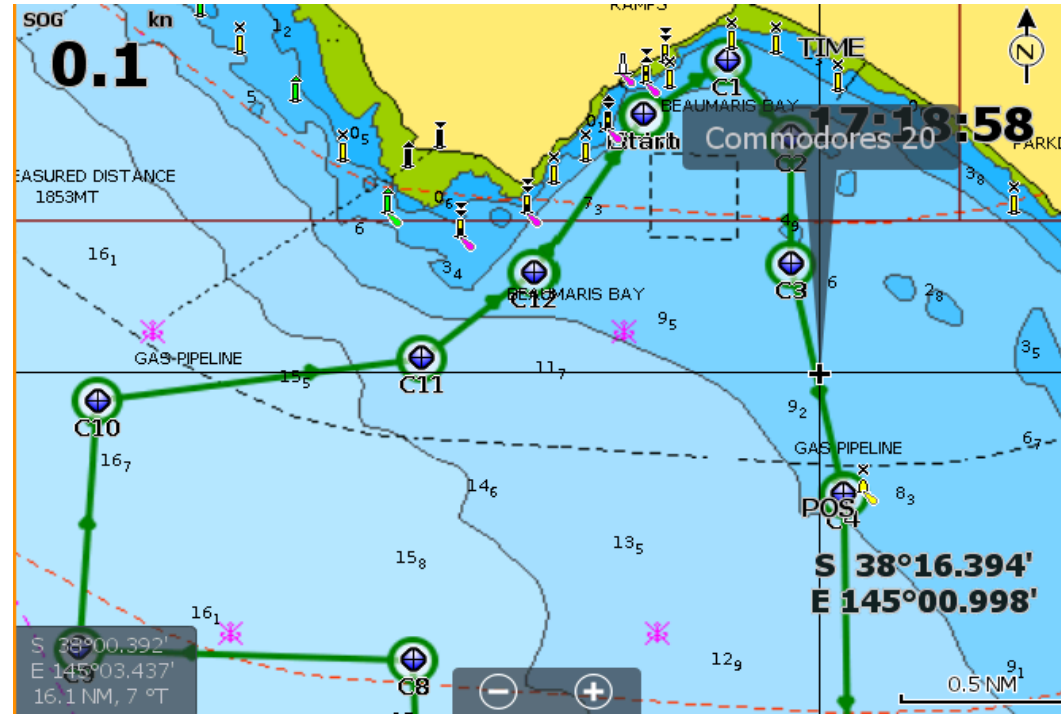
BMYS Training 2025



GPS – Do you need a GPS for a Nav Rally?

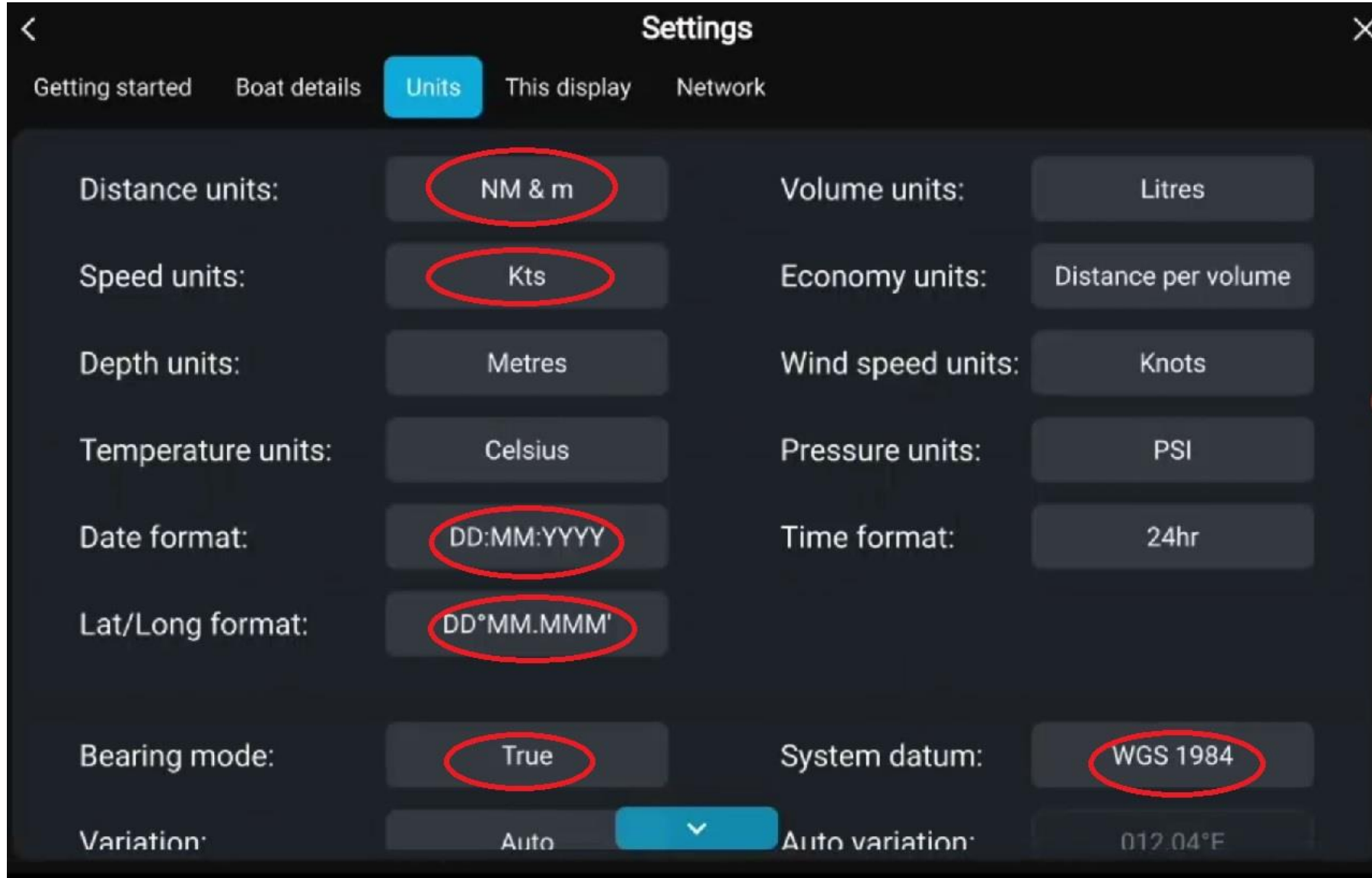


OR



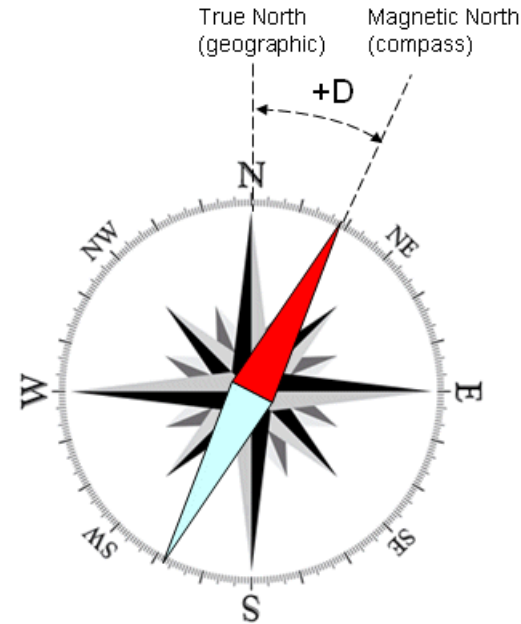
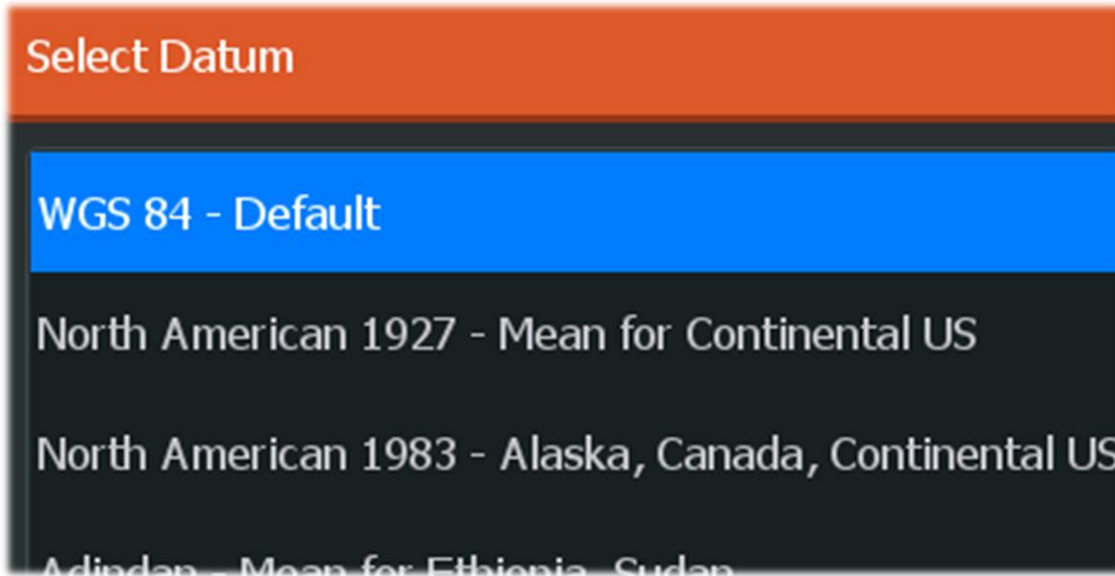
- **YES** - you do you need a GPS for a Nav Rally?
- Maps are NOT necessary to run a Nav Rally
- GPS setup is the same for Handheld GPS or Chartplotter
- Keep it Simple – Handheld with no maps is fine!

GPS – Settings and Units - 1

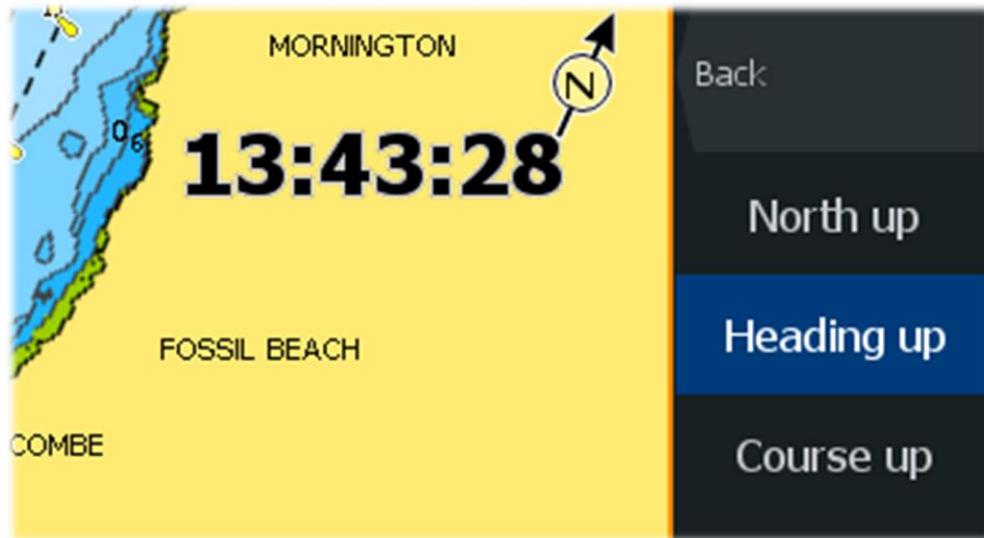


- Set GPS or Chartplotter units
- Same for handheld GPS to high end chart plotter
- Nautical miles and metres for distance
- Knots for speed
- Lat/Lon – Degrees and decimal mins
- Bearing True (not Magnetic)
- Datum WGS84

GPS – Settings and Units - 2



- **Set GPS or Chartplotter units**
- **Same for handheld GPS to high end chart plotter**
- **Nautical miles and metres for distance**
- **Knots for speed**
- **Lat/Lon – Degrees and decimal mins**
- **Bearing True (not Magnetic)**
- **Datum WGS84**

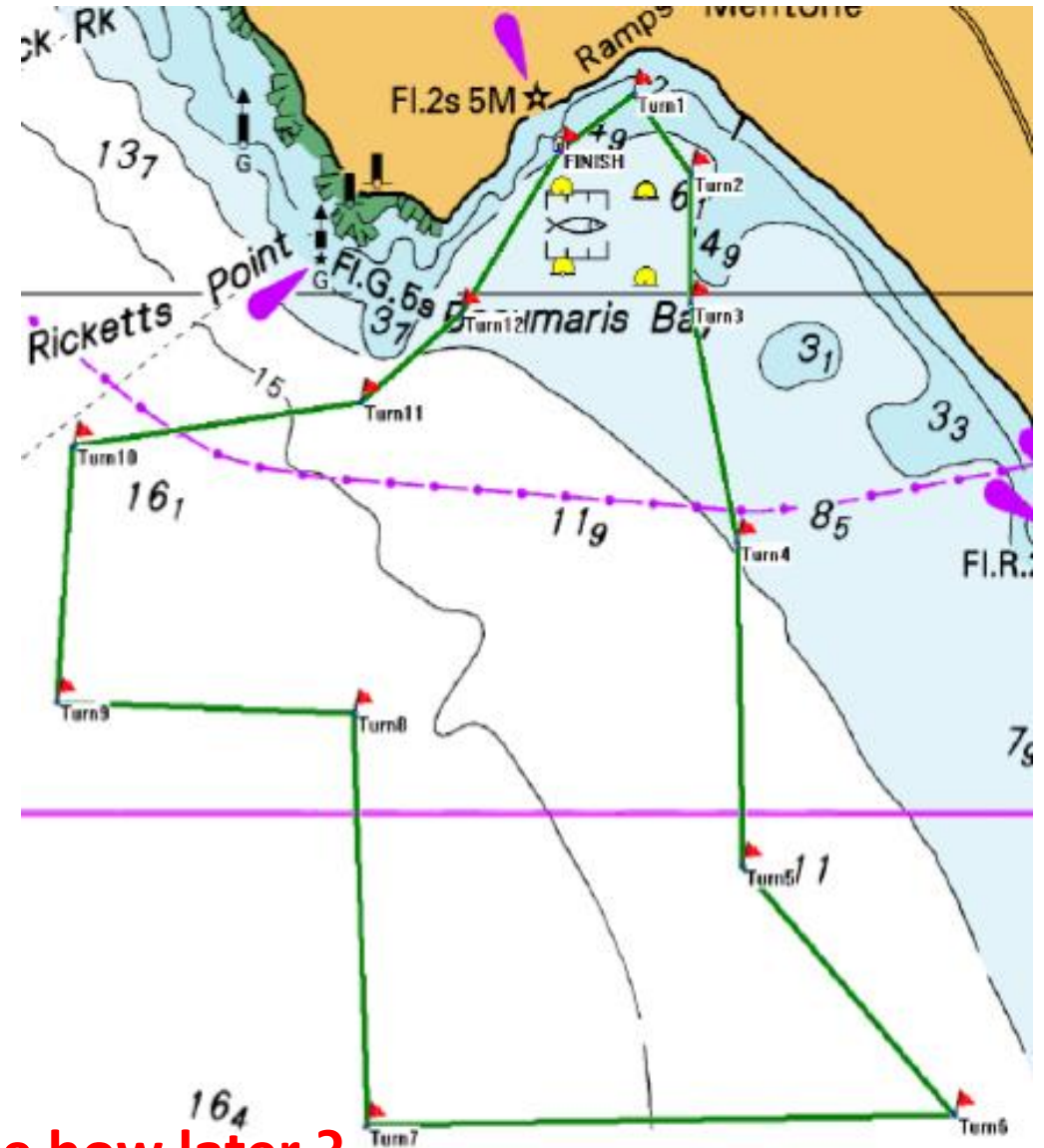


Magnetic declination in Melbourne, Australia is **+11.63°**

Plotting the Course – Legs and Turns

COURSE INSTRUCTIONS

LEG	DEGREES (TRUE)	DISTANCE (Nm)	TOTAL DISTANCE (Nm)	LATITUDE	LONGITUDE
Start				37 59.550 S	145 02.750 E
1	55	0.31	0.31	37 59.372 S	145 03.072 E
2	142	0.32	0.63	37 59.624 S	145 03.322 E
3	180	0.41	1.04	38 00.034 S	145 03.322 E
4	168	0.77	1.81	38 00.787 S	145 03.525 E
5	179	1.02	2.83	38 01.806 S	145 03.547 E
6	137	1.07	3.90	38 02.588 S	145 04.473 E
7	269	2.02	5.92	38 02.623 S	145 01.910 E
8	358	1.3	7.22	38 01.325 S	145 01.853 E
9	272	1.02	8.24	38 01.289 S	145 00.560 E
10	4	0.81	9.05	38 00.482 S	145 00.632 E
11	82	1.0	10.05	38 00.343 S	145 01.887 E
12	51	0.44	10.49	38 00.066 S	145 02.321 E
Finish	33	0.62	11.11	37 59.550 S	145 02.750 E



Course Instructions becomes Navigation Route – See how later ?



BEAUMARIS
MOTOR YACHT SQUADRON

Nav Rally Questions

