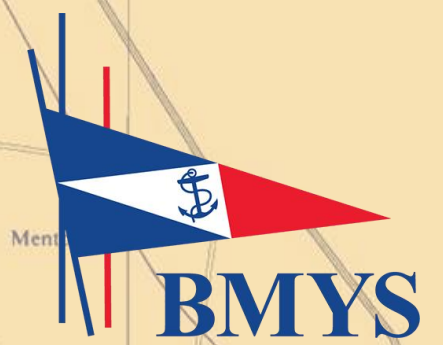
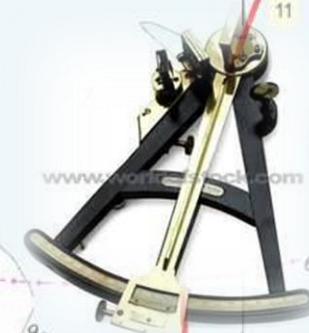
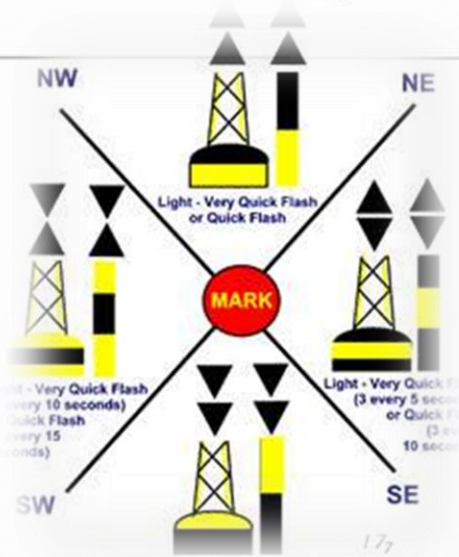


# What is a Nav Rally?



BMYS Training 2025



# Navigation Rallies – What are they all about?

- Follow pre-determined course on the water at an accurate speed. Example course shown.
- Course is a series of legs connected by turn points.
- Travel at constant speed nominated by the competitor between 5 and 12 knots
- Boats travel 10 to 12 Nautical Miles at constant speed in just over an hour.
- NOT a race. Be in the right place at the right time. Timed checkpoints along a course at unknown locations.
- Like orienteering but on the water.



# NavRally – Tack Tracker Replay



- Tack Tracker used by BMYS to run events
- Data logger in boat
- System calculates score for each boat

• **BMYS Home Page**

<https://tacktracker.com/cloud/home/bmysnav>



# What do you need for Nav Rally?



THE BEAUMARIS MOTOR YACHT SQUADRON

THE COMMODORE, BOATING COMMITTEE & MEMBERS Present

THE COMMODORES NAV RALLY

On Sunday 23<sup>rd</sup> February 2020

Members of all clubs are invited to attend this event to be held at the Beaumaris Motor Yacht Squadron

Followed by lunch starting at 12:30 pm  
Free to all Skippers & Navigators ---\$10 per head others

ENTER NOW FOR THIS GREAT EVENT

Entries close on Sunday 16<sup>th</sup> February 2020

All participating entrants will have the opportunity to win great prizes



Course Document



+



Boat



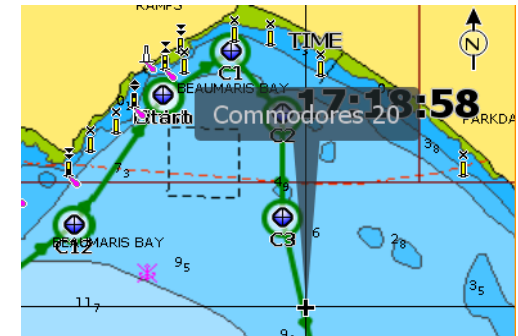
## COURSE INSTRUCTIONS

LEG	DEGREES (TRUE)	DISTANCE (Nm)	TOTAL DISTANCE (Nm)	LATITUDE	LONGITUDE
Start				37 59.550 S	145 02.750 E
1	55	0.31	0.31	37 59.372 S	145 03.072 E
2	142	0.32	0.63	37 59.624 S	145 03.322 E
3	180	0.41	1.04	38 00.034 S	145 03.322 E
4	168	0.77	1.81	38 00.787 S	145 03.525 E



GPS

OR



Team

SKIPPER NAME: Roger Hartley		SPEED: 10 KN		BOAT NAME		
NAVIGATOR NAME : Brendan O'Donoghue				TACK-TRACK		
POSITION	DIST	SPEED	TIME	TOTAL DIST	TOTAL TIME	ETA
START HEAD 220 TRUE	0.000	10	0:00:00	0.000	0:00:00	9:30:00
TURN TO 190 TRUE	0.900	10	0:05:24	0.900	0:05:24	9:35:24
Intermediate Position 1A	0.450	10	0:02:42	1.350	0:08:06	9:38:06
Intermediate Position 1B	0.480	10	0:02:53	1.830	0:10:59	9:40:59
Intermediate Position 1C	0.670	10	0:04:01	2.500	0:15:00	9:45:00
TURN TO 138 TRUE	2.220	10	0:13:19	3.120	0:18:43	9:48:43
TURN TO 48 TRUE	0.790	10	0:04:44	3.910	0:23:28	9:53:28

Running Sheet



Clock

# Navigation Rallies – Who Wins ?

- Time checks are taken at unknown points around the course.
- Data on your boat logger records waypoints every 2 secs.
- At checkpoints target time is compared to actual time of arrival.
- One point is lost for each second boat is early or late at the checkpoints.
- Your start time and speed used to work out when you should arrive at each of these points.
- Tack Tracker system calculates your score using Data Logger.
- Winner is boat that gets closest to their predicted or target times.



# Enter Nav Rally – How?

- Assemble crew – Skipper and Navigator
- Enter Online or Email entry to Brendan – week before
- You will receive running sheet, event details, start time from Event Manager – Brendan
- Prepare navigation / GPS – Keep it simple
- Plot course in GPS unit or download GPX course file from website.
- Setup Boat – Clock, GPS, Running Sheet and Coffee
- See online help guides for more info.....  
<https://www.bmys.com.au/members/nav-rally>

MAIL, or Email TO:  
Postal Address:  
Beaumaris Motor Yacht Squadron  
Po Box 45, Black Rock 3193  
Email: [bodco@bigpond.com](mailto:bodco@bigpond.com)  
BMYS: [bmys@bigpond.com](mailto:bmys@bigpond.com)

OR:  
Enter Online:  
Beaumaris Motor Yacht Squadron  
<https://www.bmys.com.au/nav-rally-entry-form/>

**Entries must be received by Sunday 16th February 2020**

Boat Name: ..... Race No. .... Reg No. ....  
Club: ..... Radio: VHF  27 MHZ

Use of electronic navigational aids in this Nav. Rally Yes  No

HULL TYPE: Planing  or Displacement

BOAT LENGTH: (Meters) ..... BOAT COLOUR: .....

DESCRIPTION OF BOAT.....

MOTOR: .....

SPEED: 5  6  7.5  10  12  .....  Other (Please Tick one)

SKIPPER: ..... Phone No..... Mobile No.....

E-mail address ..... Fax No.....

# Navigation Rallies – Online Modules

Check out the online Nav Rally how-tos for more details and information. Lots of tips and tricks.

<https://www.bmys.com.au/members/nav-rally>

- Understanding the Info you have
- How to Enter your Boat
- GPS – How to plot NavRally Course
- Navigation Route de-mystified
- The Running Sheet explained
- How to Start / Prepare your Boat
- Starting and Finishing a Nav Rally
- Tack Tracker – How it works and scores
- Navigation Tech Talk



# Nav Rally Questions

